

Need a Mortgage in principle
to make offers? Call us now
for quick assistance!
0121 775 0101



Do you need to sell?
Start your journey now!
Call us we can help.
0121 775 0101



SCAN FOR MORE INFO
SIZE - 1992 Sq Ft
TENURE - Freehold
COUNCIL TAX - Solihull MBC - F
BROADBAND - Upload Max 1000Mbps
Download Max 1000Mbps
MOBILE - O2 Vodafone
EPC - E - 52
PARKING - For at least 5 Cars
FLOODRISK - Very Low
SERVICES - Mains
COVENANTS - N/A

Are you an investor
interested in expanding your
portfolio?

**Call 0121 775 0101 to provide your
investment criteria for alerts.**

UPWEY AVENUE

Solihull, B91

Nestled on the charming Upwey Avenue in Solihull, this impressive detached house offers a perfect blend of traditional elegance and modern convenience. The property has been meticulously renovated to an exceptionally high standard, making it an ideal family home.

FEATURES

- Traditional Detached House
- Beautifully Presented Throughout
- Lounge with Bay Window
- Stunning Kitchen/Breakfast/Family Room
- Utility & Ground Floor Shower Room
- Principal Bedroom with Dressing Area & En-Suite Shower Room
- Three Further Good Sized Bedrooms & Modern Family Bathroom
- Loft/Hobbies Room
- Rear Garden with Office Garden Room
- Walking Distance to Solihull Town Centre
- Tudor Grange Academy Catchment



SCAN TO **VIEW OUR
WEEKLY FILMS &
SUBSCRIBE**

Sneak Peeks

Every week, we unveil "Sneak Peeks," a feature showcasing exclusive properties before they hit Rightmove and other platforms.

The Landlord Club

Join our Landlord Club for weekly updates on legislation, market trends, and our Letting Director's 'Investment Pick of the Week' for optimal ROI.

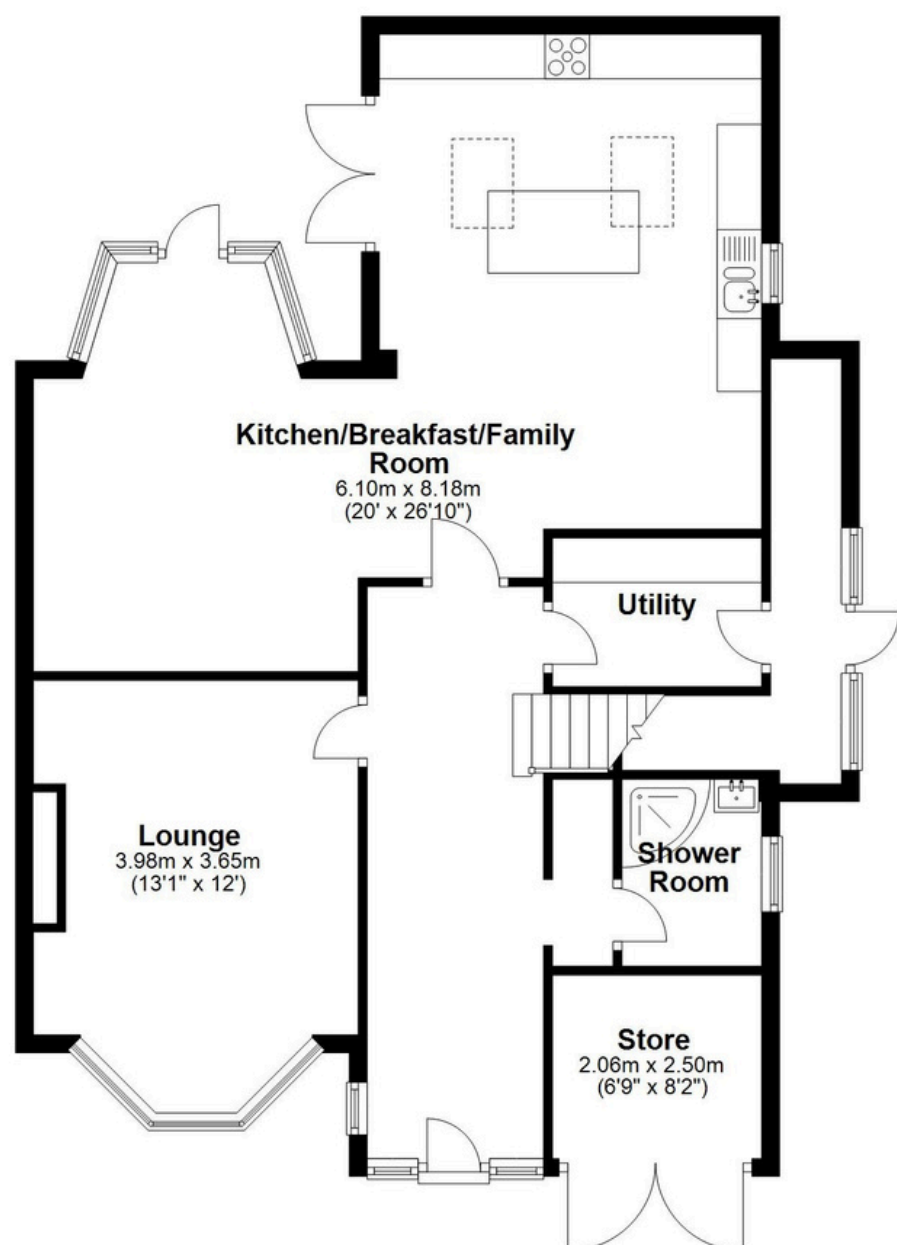
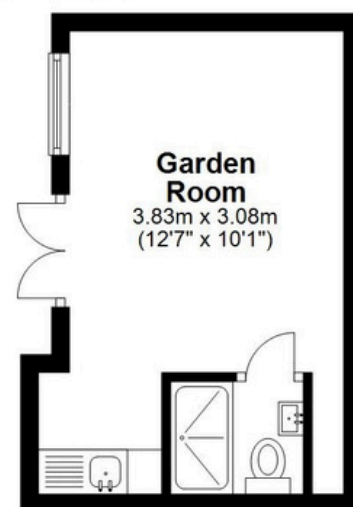
HTSPMD

Tune into 'How's The Solihull Property Market Dom' weekly for a quick, insightful snapshot of the market.

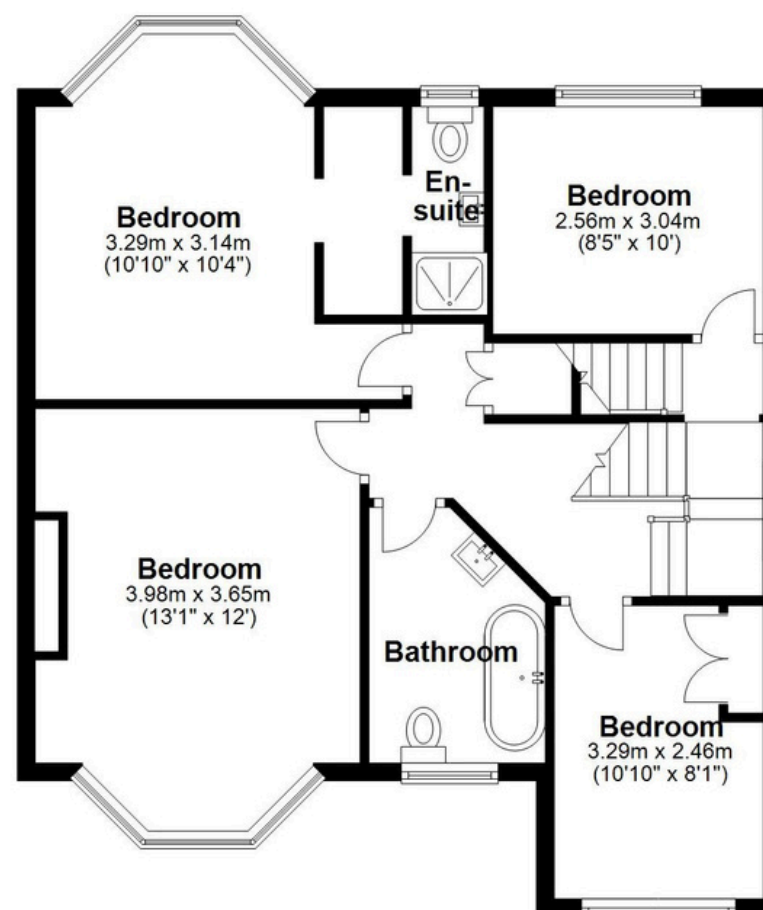
The Mortgage Update

Get weekly insights and the best deals with our Mortgage Update, your shortcut to navigating the complex mortgage landscape confidently.

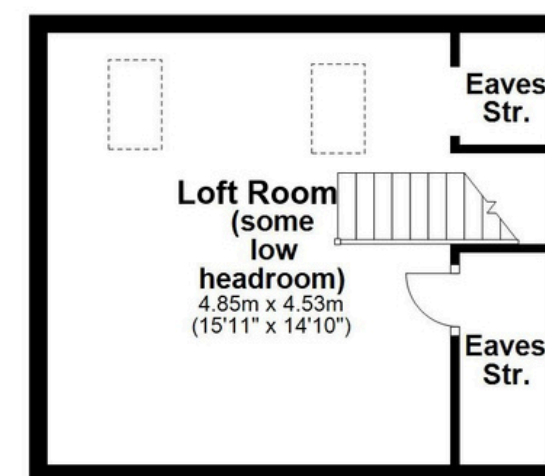
Ground Floor
Main area: approx. 92.6 sq. metres (996.3 sq. feet)
Plus garden room, approx. 14.2 sq. metres (152.8 sq. feet)



First Floor
Approx. 65.2 sq. metres (702.2 sq. feet)



Second Floor
Approx. 27.4 sq. metres (294.5 sq. feet)



Main area: Approx. 185.1 sq. metres (1992.9 sq. feet)
Plus garden room, approx. 14.2 sq. metres (152.8 sq. feet)

This floor plan is for illustration purposes only, this is not intended to be a measured/scaled survey or comply with RICS guidelines. All measurements (including total floor area) openings, orientation and floor area are approximate. No details are guaranteed, they cannot be relied upon for any purpose and do not form part of any agreement. A party must rely upon its own inspection(s). No responsibility is taken for any error, omission, or mis-statement.
Plan produced using PlanUp.